



GAT MONTHLY MEMBERSHIP PROGRESS REPORT

Results as of: 6/30/2024

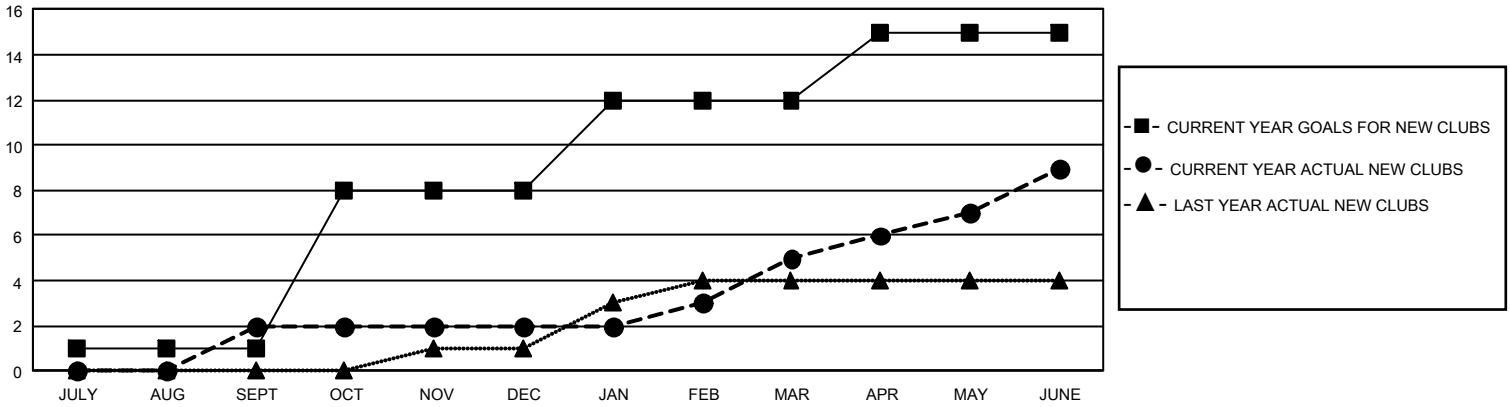
GMT Constitutional Area 5 - J, Group I

REPORT DOES NOT INCLUDE CLUBS IN UNDISTRICTED AREAS.

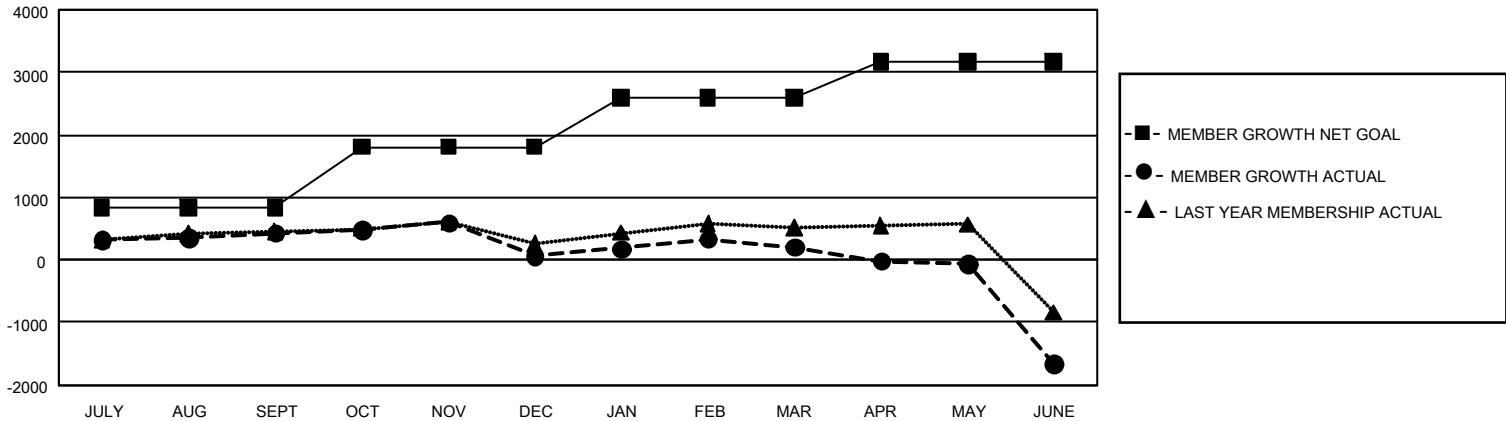
Clubs			
RESULTS FOR 2023-2024			
QUARTER	NEW CLUB GOAL	NEW CLUBS	DROPPED CLUBS
JULY/AUG/SEPT	3	2	3
OCT/NOV/DEC	21	0	5
JAN/FEB/MAR	12	3	0
APR/MAY/JUNE	9	4	31

Members			
RESULTS FOR 2023-2024			
QUARTER	MEMBER GROWTH NET GOAL	MEMBER GROWTH ACTUAL	DROPPED MEMBERS ACTUAL (including transfers)
JULY/AUG/SEPT	830	1,214	702
OCT/NOV/DEC	981	593	928
JAN/FEB/MAR	785	934	741
APR/MAY/JUNE	571	1,060	2,826

GOALS AND ACTUAL NEW CLUBS CUMULATIVE



GOALS AND ACTUAL MEMBERS CUMULATIVE



DROPPED CLUBS: 39	879 CLUBS OF 1,128 ADDED 1 OR MORE NEW MEMBERS	GENDER DISTRIBUTION	
		MALE 29,786 (78.63%) FEMALE 8,088 (21.35%) NON BINARY 0 (0.00%) PREFER NOT TO ANSWER 6 (0.02%)	
DROPPED MEMBERS		CLICK HERE FOR CUMULATIVE MEMBERSHIP DATA	TOTAL FAMILY UNIT MEMBERS 9,169
DECEASED 328 CLUB CANCELLED 33 OTHER 4,800 TOTAL 5,161	FAMILY MEMBERS PAYING HALF DUES 5,093		